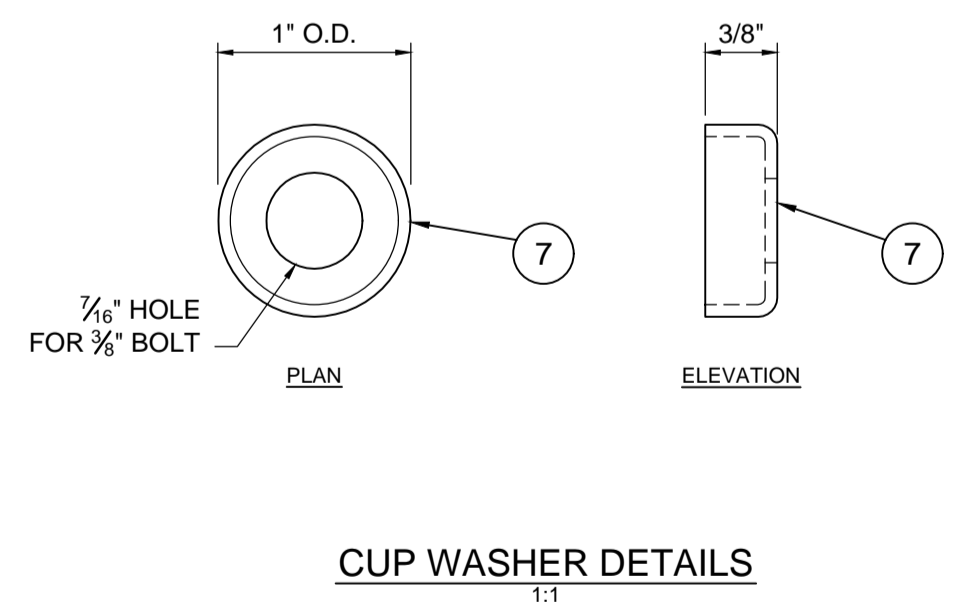
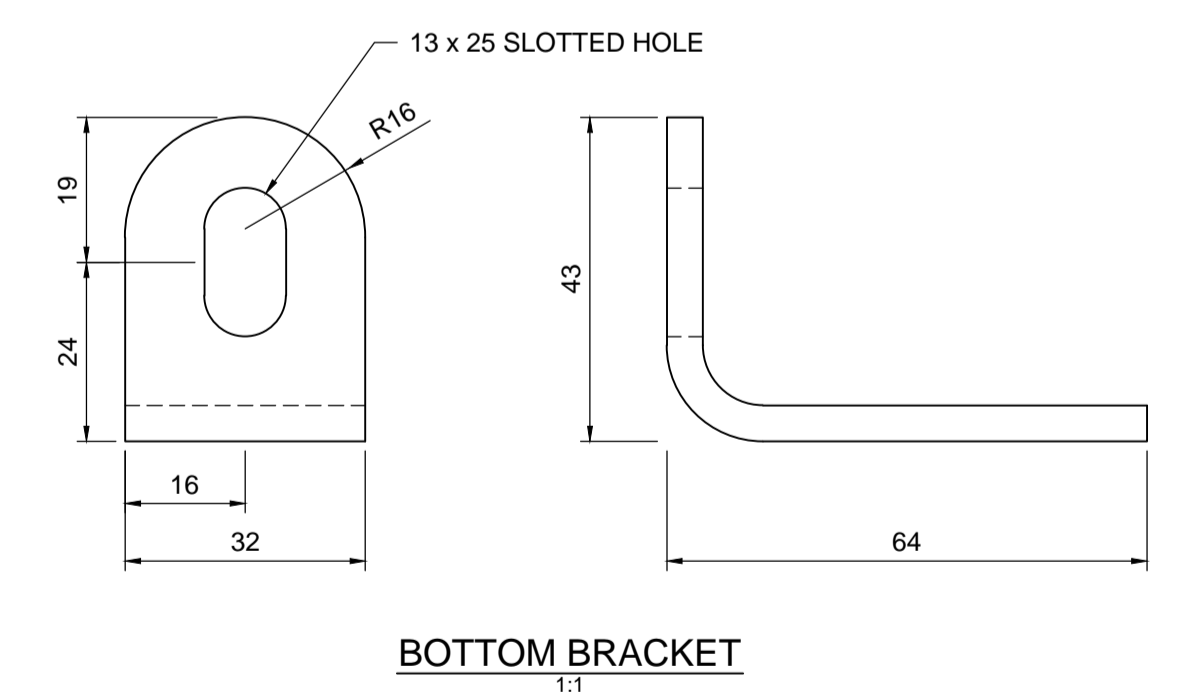
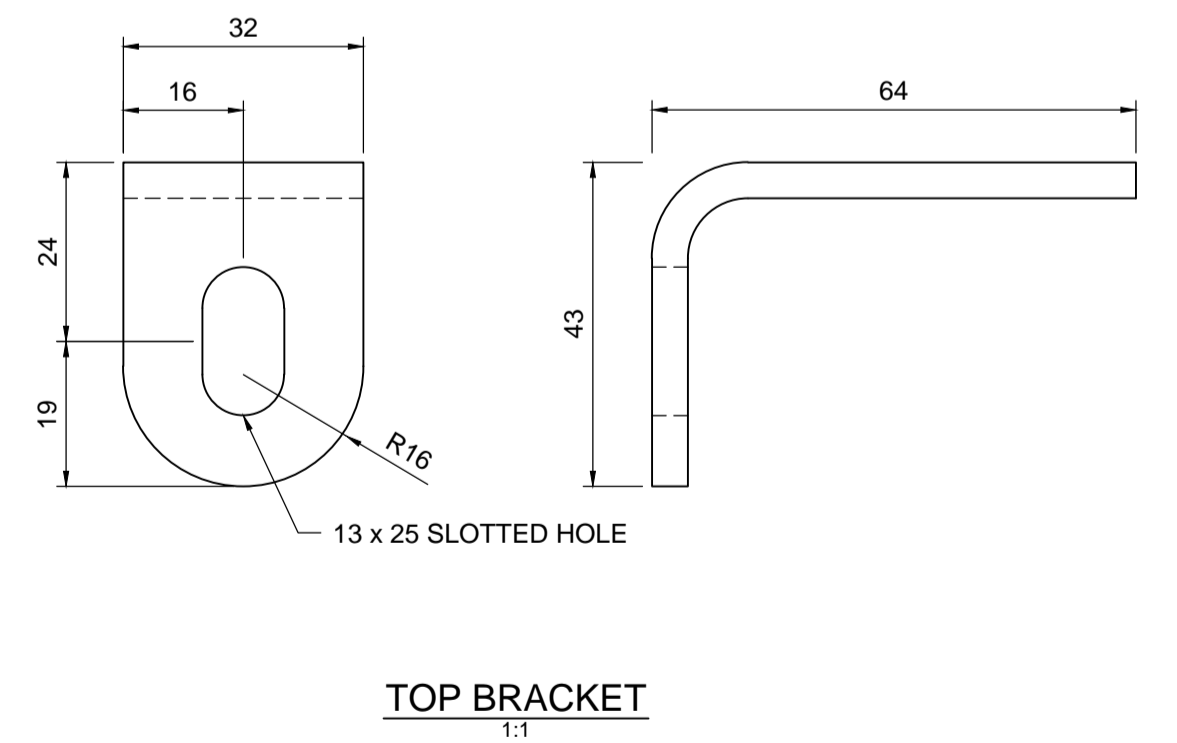
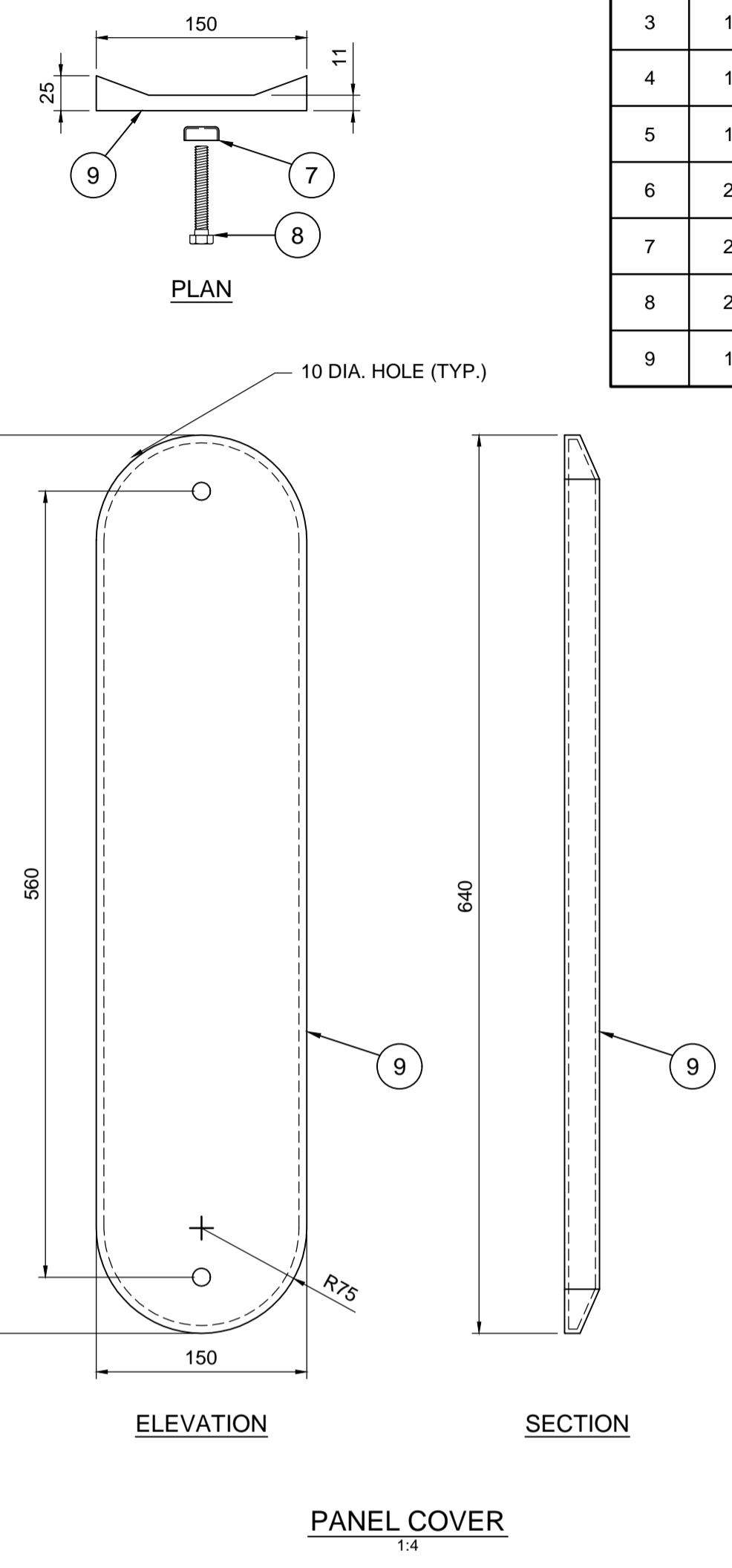
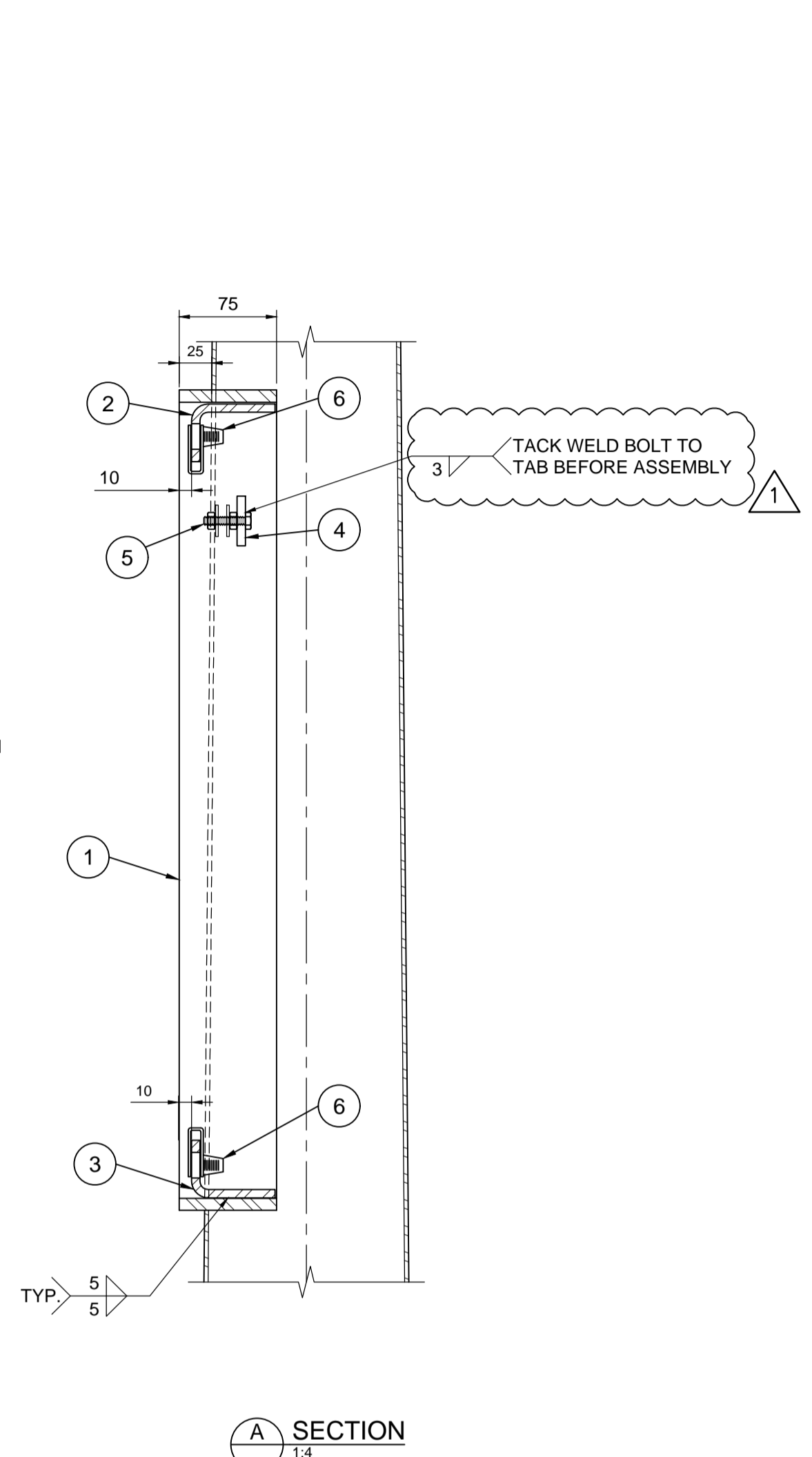
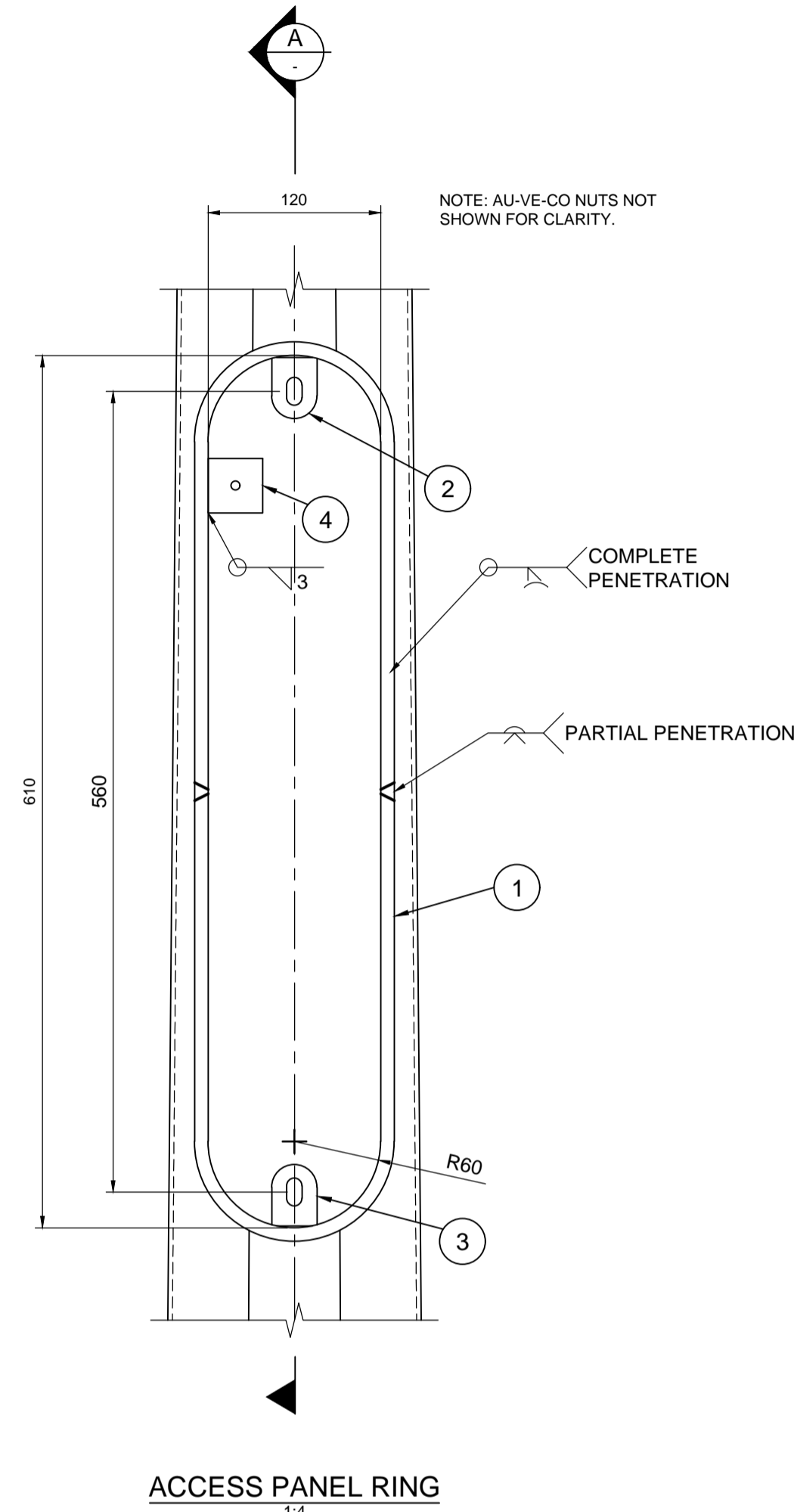


**BILL OF MATERIALS**

MK. NO.	QTY.	DESCRIPTION	SIZE	MATERIAL
1	2	ACCESS PANEL HALF-REINFORCING RING	9.5 x 75 x 686	CSA G40.21 300W
2	1	TOP COVER MOUNTING BRACKET	4.76 x 32 x 107	CSA G40.21 300W
3	1	BOTTOM COVER MOUNTING BRACKET	4.76 x 32 x 107	CSA G40.21 300W
4	1	GROUNDING PLATE	6.35 x 40 x 40	CSA G40.21 300W
5	1	HEX BOLT (GROUND LUG) C/W 2 HEX NUTS & 2 FLAT WASHERS	1/4" - 20 UNC FULL THREAD x 2" LONG	ASTM F593 TYPE 316
6	2	AU-VE-CO NO. 10055 NUT OR EQUAL	3/8" - 16 UNC	STEEL PLATED
7	2	CUP WASHER	16 GA.	ASTM B209 GR. 3003-H14
8	2	HEX BOLT C/W 20 O.D. FLAT WASHER	3/8" - 16 UNC FULL THREAD x 65 LONG	ASTM F593 TYPE 316
9	1	ACCESS PANEL COVER	-	NON-METALLIC

**NOTES:**

- ALL MATERIALS, EXCEPT STAINLESS STEEL ITEMS, SHALL BE HOT DIP GALVANIZED IN ACCORDANCE WITH ASTM A123 (LATEST REVISIONS) WITH NET RETENTION OF 610 gm<sup>2</sup>.
- GRIND ALL SHARP POINTS AND EDGES.
- PACKAGE AND DELIVER FOLLOWING COMPONENTS SEPARATELY:
  - PANEL COVER
  - HEX GROUNDING BOLT C/W NUTS AND WASHERS
  - PANEL COVER HEX BOLTS C/W FLAT WASHERS AND CUP WASHERS
  - AU-VE-CO NUTS



**APEGM**  
Certificate of Authorization  
**Dillon Consulting Limited (MB)**  
No. 1789 Date: JUL. 11, 2018

DESIGNED BY: KNL DRAWN BY: KNL CHECKED BY: SSR APPROVED BY: -			<b>THE CITY OF WINNIPEG</b> PUBLIC WORKS DEPARTMENT	
			ACCESS PANEL ASSEMBLY	
			CITY DRAWING NUMBER: S-SD-17	
			SHEET 17 OF 18 CONSULTANT DRAWING NUMBER: N/A	
B.M. ELEV.	HOR. SCALE: AS SHOWN VERTICAL: AS SHOWN	RELEASED FOR CONSTRUCTION	CONSULTANT PROJECT NUMBER: 18-7248	DATE:
NO. REVISIONS	DATE	BY	DATE	DATE

C:\pwworking\directory\projects\2018\40mg\vrms\11050\187248-ACCESS PANEL DETAILS.dwg